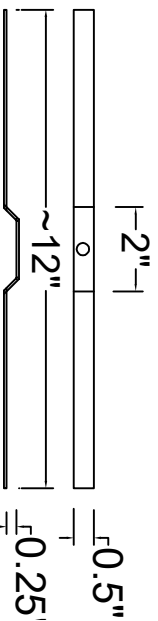


- PARTS:**
1. LEICA DISTO E7500! RANGE 200M / REMOVABLE BATTERY (\$491)
  2. LEICA TRI 100 TRIPOD (\$95.48)
  3. AMAZON BASICS CAMERA MONOPOD - 67 Inch, Black (\$21.00 FOR 1; 29.69 FOR 2)
  4. CONTEMPO DRY ERACE BOARD 11"x14" SET OF 4
  5. SOUTHWIRE SPEEDSET TORPEDO LEVEL (\$21)  
[SCREW ON TOP CAMERA THREAD OF MONOPOD]
  6. 2 #6 SCREWS 2" (MAY NEED WASHER) WITH 2 #6 WING NUTS & 2 BACK SUPPORTS
  7. BACK SUPPORT: CUT FROM HILLMAN  $\frac{1}{8}$ " x 36" x  $\frac{1}{2}$ " ALUMINUM FLAT STOCK (ACE HARDWARE CUT TO ~12" EACH). BEND TO SHAPE BELOW.



**BACK BRACE**

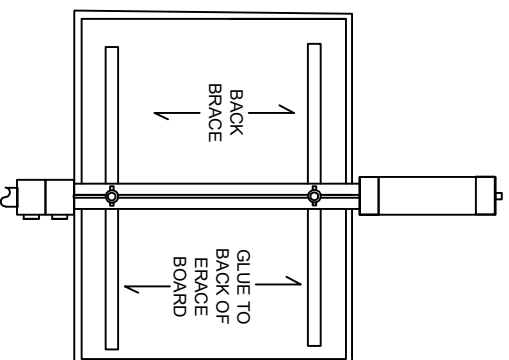
**REFLECTOR INSTRUCTIONS:**

**1. PARTS**

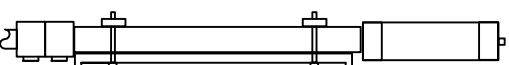
- 1 MONO POD,
- 1 D.E. BOARD, WITH FRAME PAINTED BLACK
- 2 # 6 SCREWS 2",
- 2 # 6 WING NUTS,
- 2 BACK SUPPORTS.

**2. DIRECTIONS**

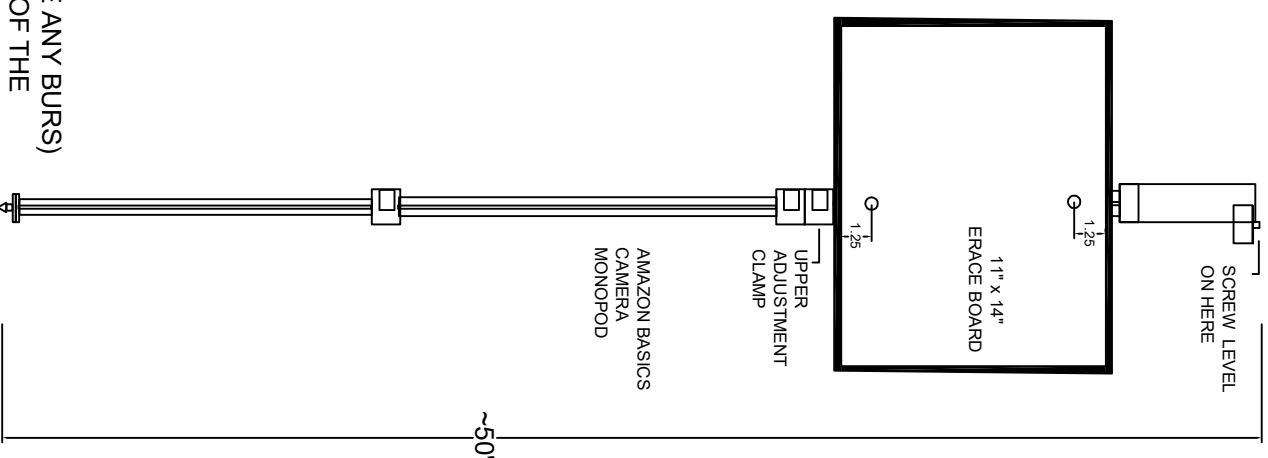
- DRILL 2 HOLES IN ERACE BOARD WITH  $\frac{3}{32}$  DRILL BIT, 1.25" FROM TOP AND BOTTOM OF LONG SIDES AT THE MID-POINT.
- PLACE ERACE BOARD ON MONOPOD SO THE BOTTOM OF THE WIDE SIDE RESTS ON UPPER ADJUSTMENT CLAMP.
- DRILL  $\frac{5}{8}$  HOLES IN THE CLOSED MONOPOD IN THE TOP GROVE TO MATCH ERACE BOARD HOLES.. ENSURE EACH DRILL HOLE IS CENTERED IN THE TOP AND BOTTOM GROVE AS THE DRILL EXITS.
- WORK TO OPEN MONOPOD SO THE 2 LOWER SECTIONS OPEN, TO A TOTAL OPEN LENGTH ~50" (REMOVE ANY BURRS)
- PUT 2 #6 SCREWS THROUGH ERACE BOARD AND SPACE BRACKETS SO BRACKET SUPPORTS THE BACK OF THE ERACE BOARD. BEND SO BRACES LIE FLAT AGAINST THE BACK
- PLACE LIQUID NAIL GLUE UNDER THE BRACE TO GLUE IT TO THE ERACE BOARD
- PUSH SCREWS THROUGH MONOPOD AND SECURE WITH THE #6 WING NUTS. (LET GLUE DRY BEFORE DISASSEMBLY)



BACK



SIDE



**RELECTOR DESIGN  
& PART LIST**

**DATE : 02/24/2021  
DWG BY: PCG**

**DIGITAL FIELD  
MEASUREMENT**